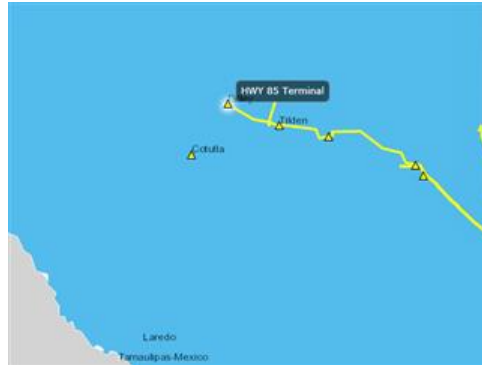




HWY 85 TERMINAL

SPECIFICATIONS

Tanks:	1 tank. Capacity: 56,000 barrels
Products:	Crude
Mode of Receipt:	Truck
Mode of Delivery:	Pipeline
Facilities:	Truck Unloading LACTs, 5 bays



MARKETING CONTACTS

Dilio Baptista
(210) 918-4479
dilio.baptista@nustarenergy.com

Jonathan Piper
(210) 918-2967
jonathan.piper@nustarenergy.com

TERMINAL CONTACTS

Doug Wiersma
(210) 606-4128
Doug.Wiersma@nustarenergy.com

PHYSICAL ADDRESS

10220 E. Hwy 85
Derby, TX 78017